

COLLEGE OF COMMUNICATION AND INFORMATION NEIGHBORHOOD PENCE HALL NAMING OPPORTUNITIES

STUDENT CREATION AND PRODUCTION (GROUND FLOOR)



- █ Student Newsroom (556 sq.ft.) (7)
- █ Student Media Advisor Offices
Director and Asst. Director (99 and 87 sq.ft.) (8A and 8B)
- █ Kernel and KRNL Editor Offices (75 sq.ft.) (9A and 9B)
- █ Student Production and Workspaces
Whitebox Studio (396 sq.ft.) (4)
Writing Lab/Classroom (518 sq.ft.) (10)
Computer Lab (5)
IT/Equipment Checkout (408 sq.ft.) (11)
Podcasting Studio (207 sq.ft.) (3)
- █ Common Areas
Lobby (554 sq.ft.) (2)
Patio (1)
- █ Other Opportunities
Recruitment Room (190 sq.ft.) (6)
IT Offices (117 and 103 sq.ft.) (12A and 12B)
Parent Room (115 sq. ft.) (13)
- █ Study Areas
- ✱ Historic Pence Stairwell (all floors)

COLLEGE OF COMMUNICATION AND INFORMATION NEIGHBORHOOD

PENCE HALL NAMING OPPORTUNITIES

COLLEGE IDENTITY/STUDENT SUPPORT (FIRST FLOOR)

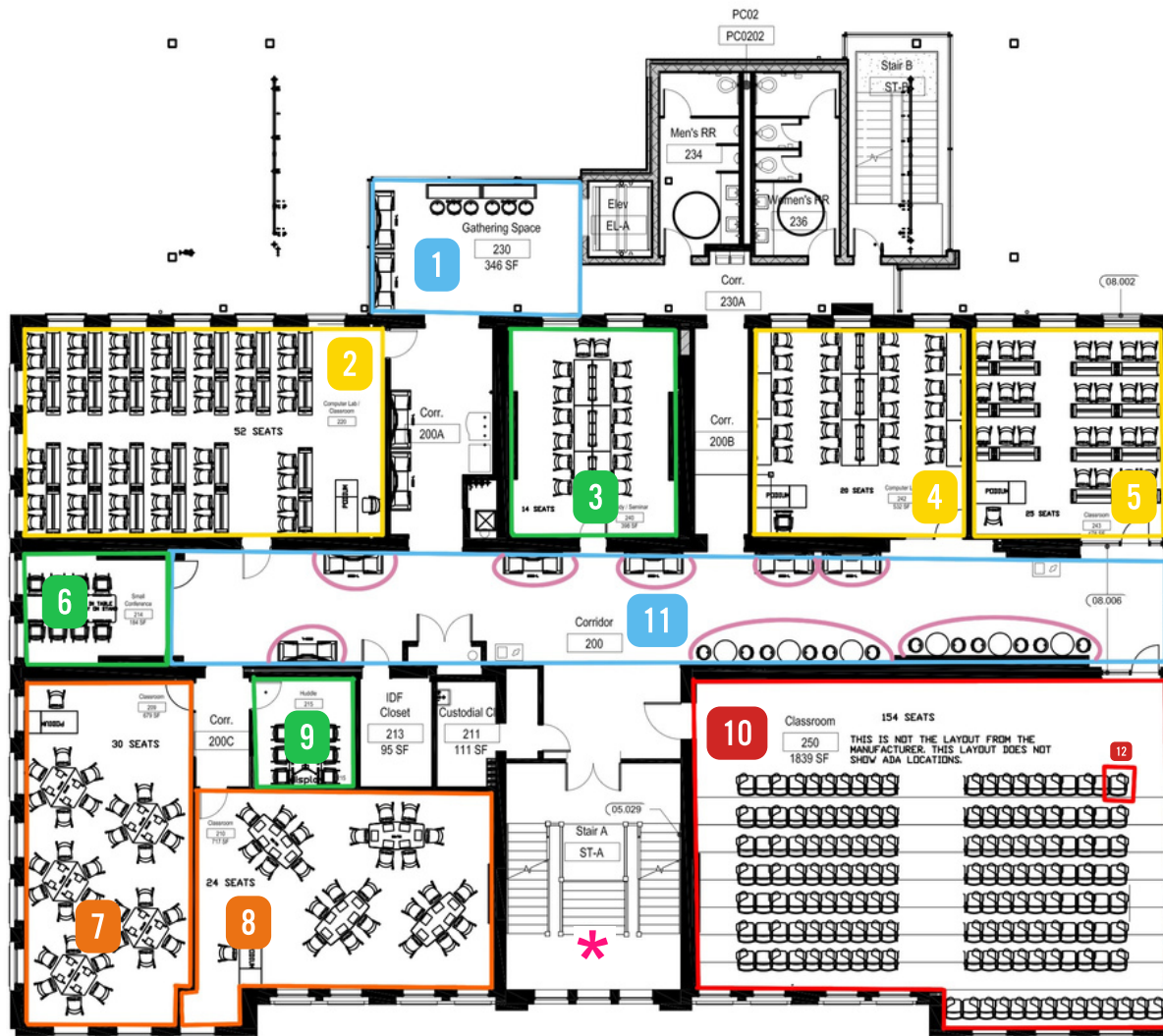


- Dean's Suite (4)
- Dean's Office (304 sq.ft.) (6)
- Dean's Staff/Associate Dean Offices (96-124 sq.ft.) (5)
- Main Conference Room (621 sq.ft.) (3)
- Lobby/Gathering Space
Rooftop Deck (302 sq.ft.) (1)
Gathering Area (381 sq.ft.) (2)
Lobby/Digital Display (10)
Corridor (11)
- Student Success Suite (606 sq.ft.) (7)
- Academic Support and Retention Section of Student Success Suite (8)
- Career Services and Alumni Engagement Section of Student Success Suite (9)
- Study Areas
- ✱ Historic Pence Stairwell (all floors)

COLLEGE OF COMMUNICATION AND INFORMATION NEIGHBORHOOD

PENCE HALL NAMING OPPORTUNITIES

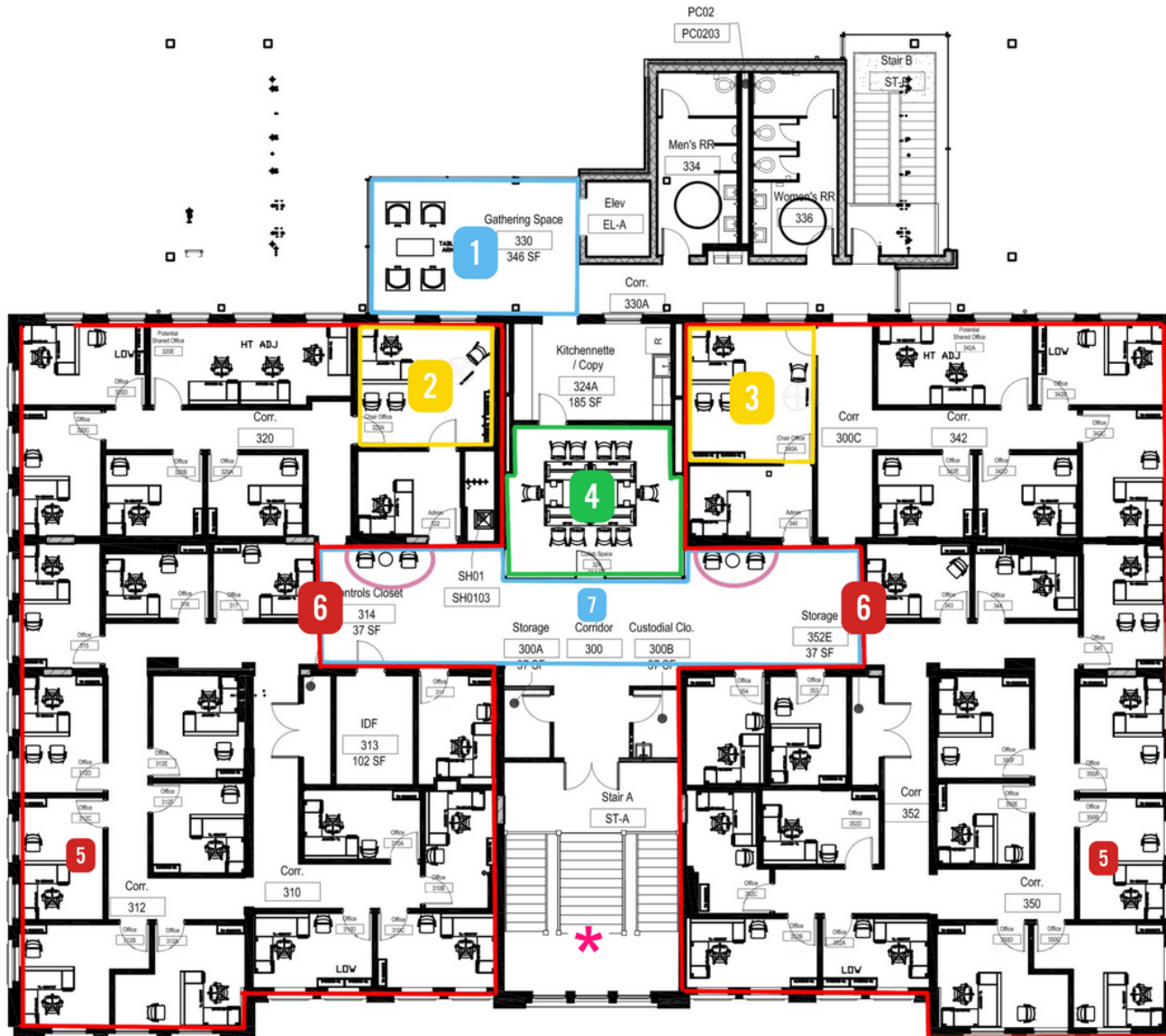
INSTRUCTIONAL SPACE/CLASSROOMS (SECOND FLOOR)



- Auditorium**
(1839 sq.ft.) (10)
Auditorium seats are also available for naming. (12)
- Medium Classroom**
(679 and 717 sq.ft.) (7 and 8)
- Classroom and Lab Space**
Classroom (855 sq.ft.) (2)
Computer Lab (532 sq.ft.) (4)
Writing Lab/Classroom (478 sq.ft.) (5)
- Common Areas**
Gathering Space (346 sq.ft.) (1)
Corridor (11)
- Meeting Spaces**
Study/Seminar Space (398 sq.ft.) (3)
Small Conference (184 sq.ft.) (6)
Huddle Space (133 sq.ft.) (9)
- Study Areas**
- * **Historic Pence Stairwell** (all floors)

COLLEGE OF COMMUNICATION AND INFORMATION NEIGHBORHOOD PENCE HALL NAMING OPPORTUNITIES

FACULTY (THIRD FLOOR)



- Departmental Suites (6)**
41 faculty office within the suites are also available for naming. (5)
- Chair Offices**
(approximately 200 sq.ft. each)
(2 and 3)
- Common Areas**
Gathering Space (346 sq.ft.) (1)
Corridor (7)
- Faculty Collaboration Space**
(314 sq.ft.) (4)
- Reception Areas**
- * Historic Pence Stairwell (all floors)**